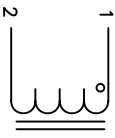
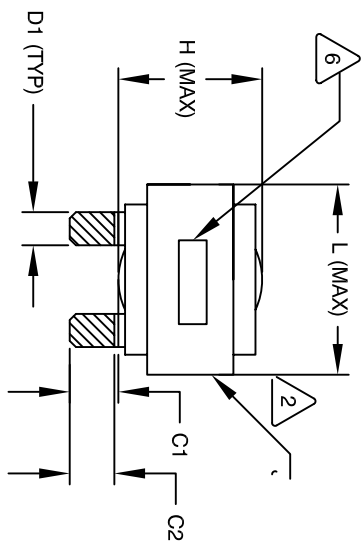


REVISION HISTORY

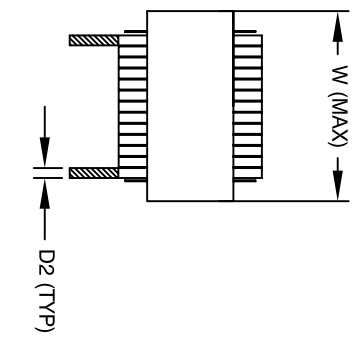
REV	ECN	DESCRIPTION	SIGN & DATE		
A		PRODUCTION RELEASE	BY	DATE	CHK
			RL	2/13/11	JCL
					2/13/11



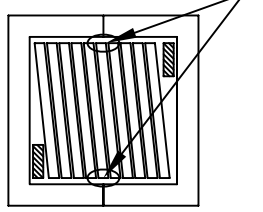
SCHEMATIC



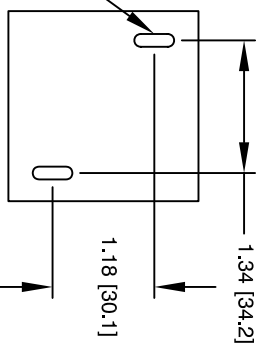
FRONT VIEW



SIDE VIEW



BOTTOM VIEW



MOUNTING HOLES PATTERN

DIMENSIONAL TOLERANCE

	mm	inch
C1	14.23±1.50	0.56 ± 0.06
C2	12.12±1.00	0.48 ± 0.04
D1	7.70 (TYP)	0.30 (TYP)
D2	2.70 (TYP)	0.11 (TYP)
L	58.0 MAX	2.29 MAX
W	58.0 MAX	2.29 MAX
H	36.0 MAX	1.42 MAX

DC-BIAS	L
0A	20.8 uH
5A	20.6 uH
10A	20.3 uH
15A	20.0 uH
20A	19.7 uH
25A	19.3 uH
30A	19.0 uH
40A	18.3 uH
50A	17.4 uH
60A	16.3 uH
70A	15.2 uH
80A	14.3 uH
90A	14.0 uH
100A	13.5 uH

- BUILT TO ROHS COMPLIANCE AND LEAD FREE.
- MARK PART NUMBER AND REVISION WHERE SHOWN
- VANISH PART AND CURE
APPLY SILICON WHERE SHOWN
- WRAP TAPE AROUND CORES
WITH CORES AND NOMEK SPACERS
ASSEMBLE PRE FORMED FLAT HELICAL COIL
CONSTRUCTION
WEIGHT: 450 GRAM (TYP)
RECOMMENDED OPERATING TEMP: -40°C TO 86°C AT 55 °C AMBIENT
HIPOT TEST FOR WINDING TO CORE ISOLATION, 1000VDC @ 2mA, 1 MIN
INTERWINDING CAPACITANCE @ 10KHZ = 17PF (TYP)
|Z|@SRF=3.7 KILO-OHM
SRF=8.4 MHZ
RATED CURRENT: 180 AMPS
DCR = 0.93 MILLIOHM MAX, USING GW INSTEK GOM-801H OR EQUAL
L@DC BIAS: SEE TABLE ON RIGHT.
L = 21uH ± 15%, MEASURED AT 10 KHZ, 0.25V, ZERO DC BIAS
SPECIFICATIONS:
- VANISH DOLPH OR EQUAL
SILICON DOW CORNING OR EQUAL
NOMEK SPACERS FOR SIDE AND CENTER LEG OF CORES
OUTER WRAP: 3M GLASS OR EQUAL
WIRE: UL RECOGNIZED 200°C RATED MAGNET WIRE
CORE: COMPACTED POWDERED CORE

- INSULATION CLASS 200°C REQUIRED
MATERIAL: UL RECOGNIZED 94V-0 FOR FLAMMABILITY

NOTES: UNLESS OTHERWISE SPECIFIED, READ FROM BOTTOM UP.

QTY	CODE IDENT	MFG. P/N	DESCRIPTION	ITEM NO.
			PARTS LIST	
			www.coilws.com sales@coilws.com	
			Coil Winding Specialist, Inc. 353 W. GROVE AVE ORANGE, CA 92665	
			TITLE: High Current Helical Inductor 21 uH, 180 Amps, Horizontal	
			SCALE: NOT_TO_SCALE	
			SIZE: DIM. NO. ES55244-210M-180AH	
			APPR: JLJU	
			DATE: 2/11/11	
			ENGR: JLJU	
			DATE: 2/11/11	
			REVISION: A	

UNLESS OTHERWISE SPECIFIED
DIMENSIONING AND TOLERANCE PER ANSI Y14.5M
ALL DIMENSIONS ARE IN INCHES AND [MILLIMETERS].
TOLERANCE INCHES: $\pm .030$
TOLERANCE METERS: $\pm .008$
ANGLE PROJECTION: $\pm 45^\circ$
DO NOT SCALE DRAWING